



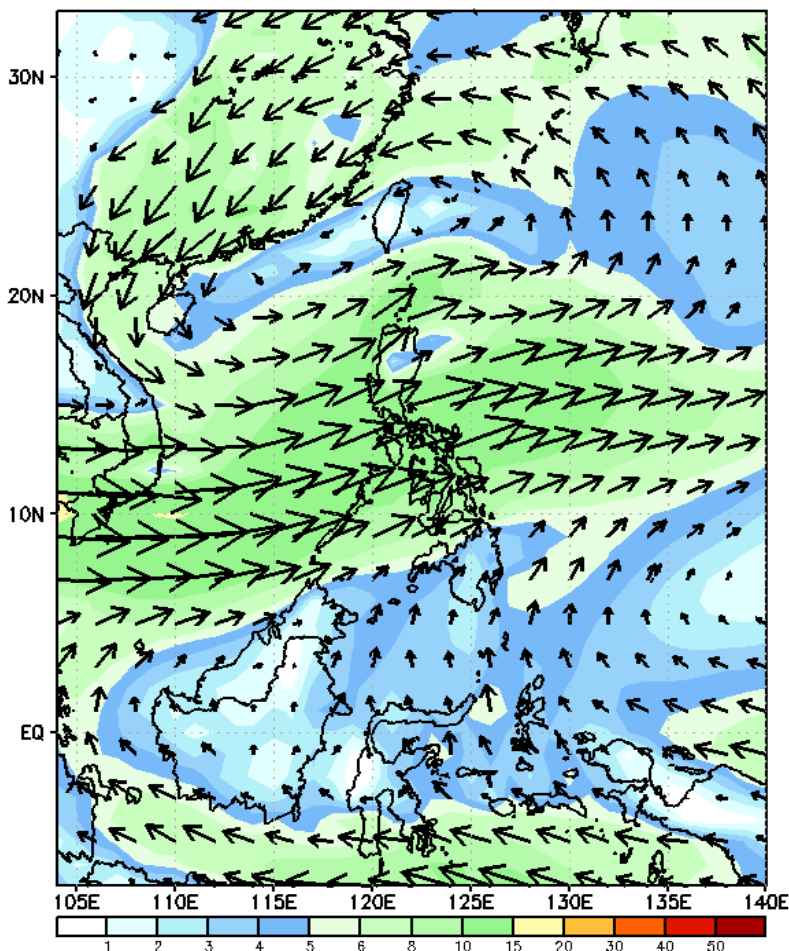
Week 1 & Week 2 Forecast for the Philippines using GEFS Model



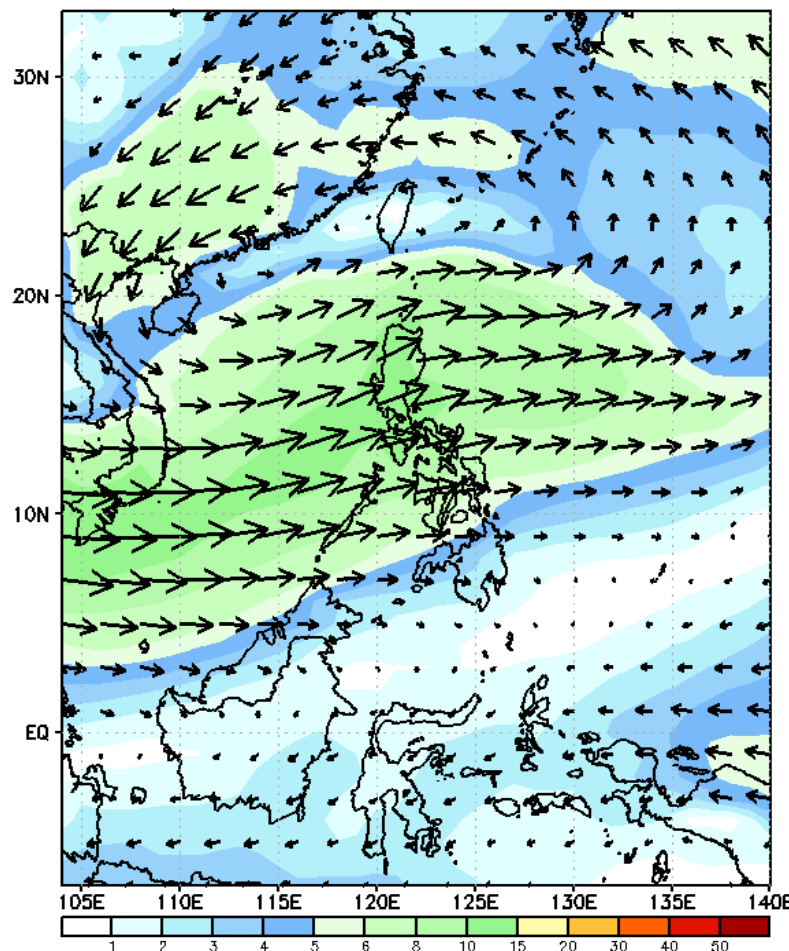
GEFS Week-1 Forecasts: Wind Forecast

Week 1: : Sep 01-07, 2023

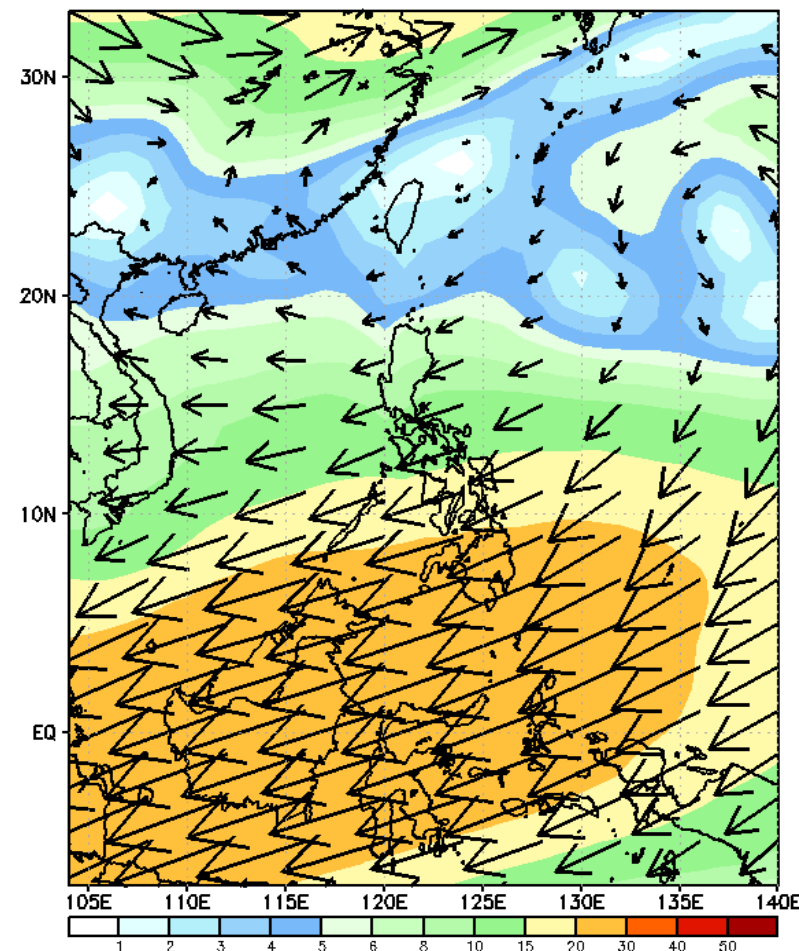
GEFS Week-1 850-hPa Wind Total
Valid: 20230901 - 20230907



GEFS Week-1 700-hPa Wind Total
Valid: 20230901 - 20230907

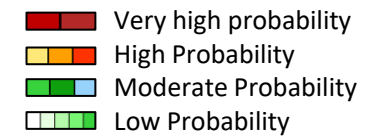


GEFS Week-1 200-hPa Wind Total
Valid: 20230901 - 20230907



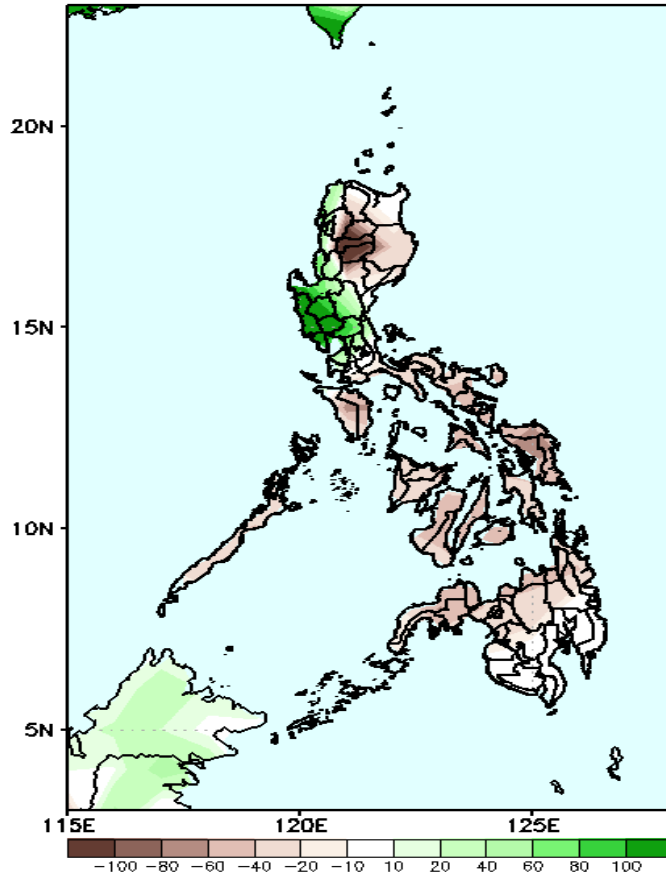
Enhanced Southwest Monsoon is forecasted to affect the western sections of Luzon and Visayas.

Precipitation Anomaly and Exceedance Probability > 25/50 mm



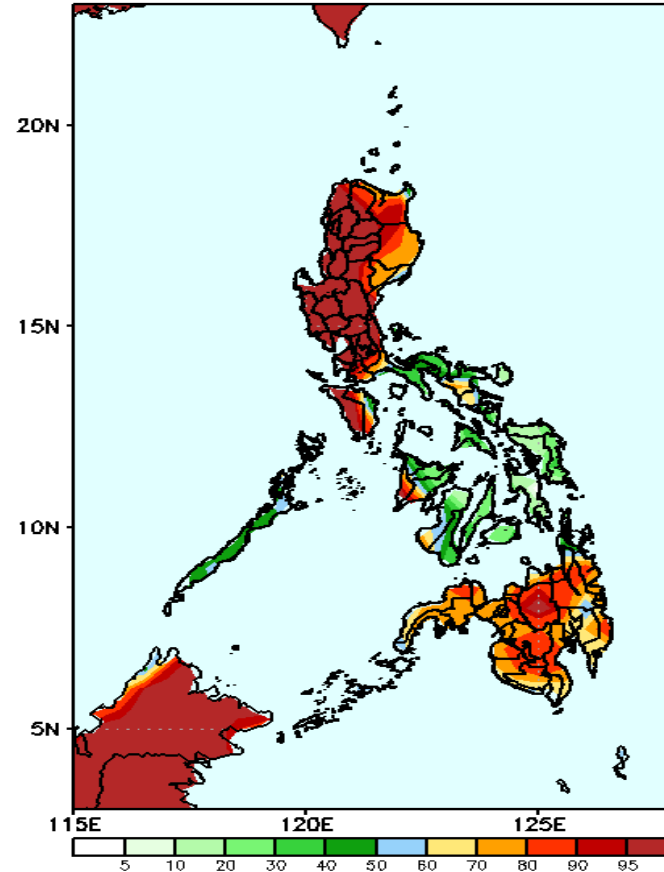
Week 1: : Sep 01-07, 2023

GEFS Week-1 Precip Anomaly
Valid: 20230901 - 20230907



Rainfall increase of up to 100mm is expected in most parts of Central Luzon while rainfall deficit of more than 100mm in Mt. Province and Ifugao: 40-80mm for the rest of the country.

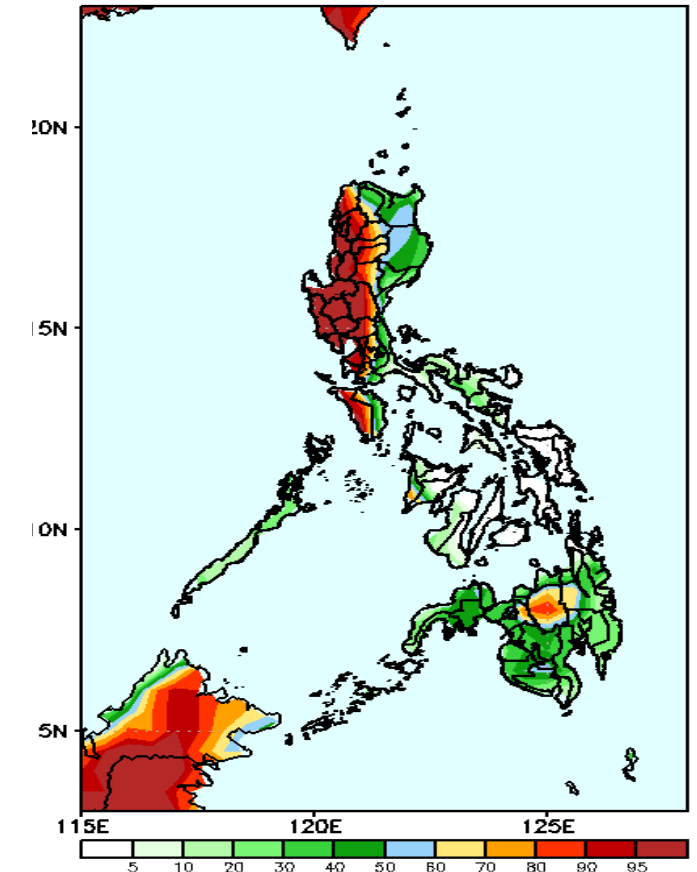
GEFS Week-1 Exceedance Prob. > 25mm
Valid: 20230901 - 20230907



Probability to Exceed 25mm

- High to very high in most parts of Luzon, Antique, and Mindanao;
- Moderate to high over the rest of Luzon and the rest of Western Visayas;
- Low over the rest of Visayas.

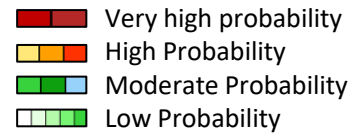
GEFS Week-1 Exceedance Prob. > 50mm
Valid: 20230901 - 20230907



Probability to Exceed 50mm

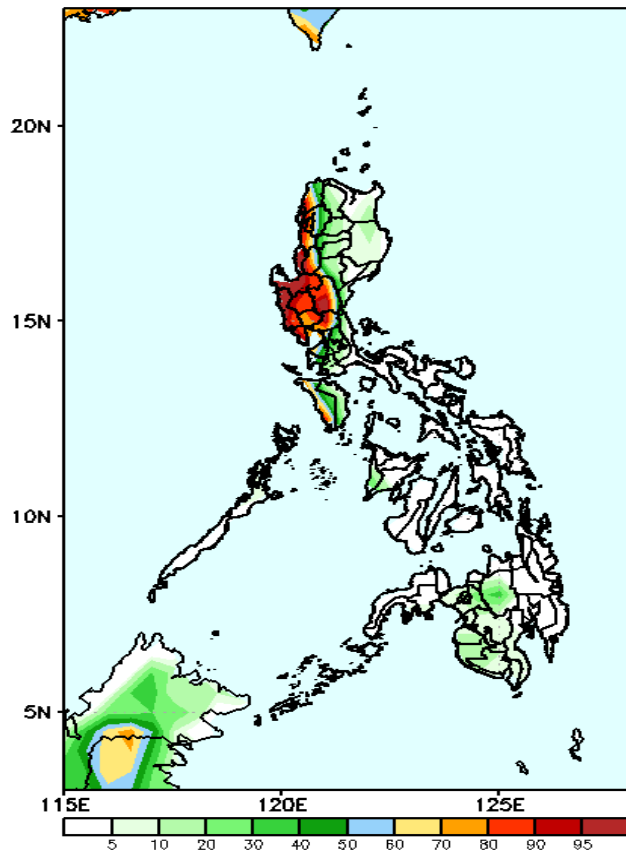
- High to very high in Ilocos Region, most of Central Luzon CAR, NCR, Cavite, Batangas and Occidental Mindoro;
- Moderate to high in Isabela and Bukidnon;
- Low to moderate over the rest of the country.

Exceedance Probability > 100/150/200 mm



Week 1: : Sep 01-07, 2023

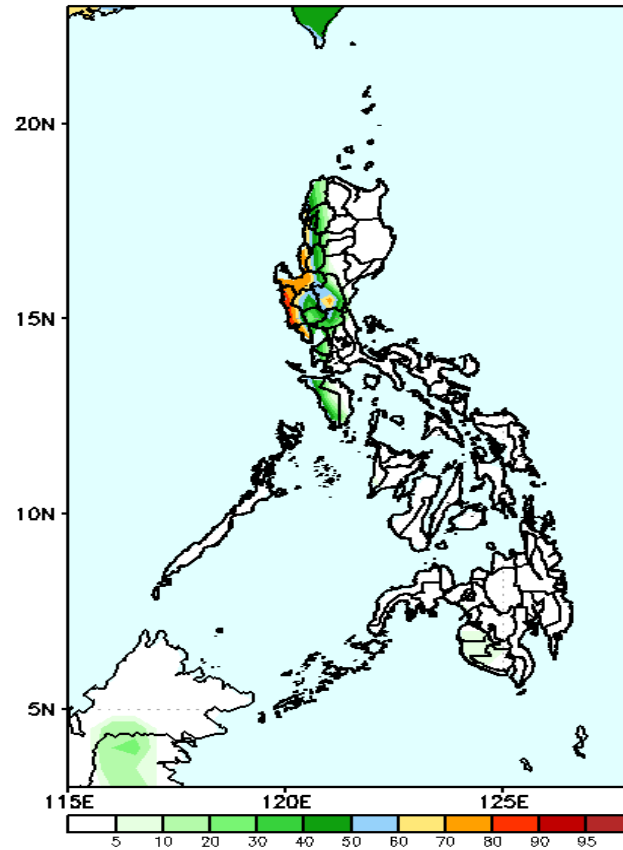
GEFS Week-1 Exceedance Prob. > 100mm
Valid: 20230901 - 20230907



Probability to Exceed 100mm

- High to very high in the western portions of Ilocos Region and Central Luzon;
- Moderate to high over the rest of Central Luzon, NCR, Cavite, Batangas, and Occidental Mindoro;
- Low over the rest of the country.

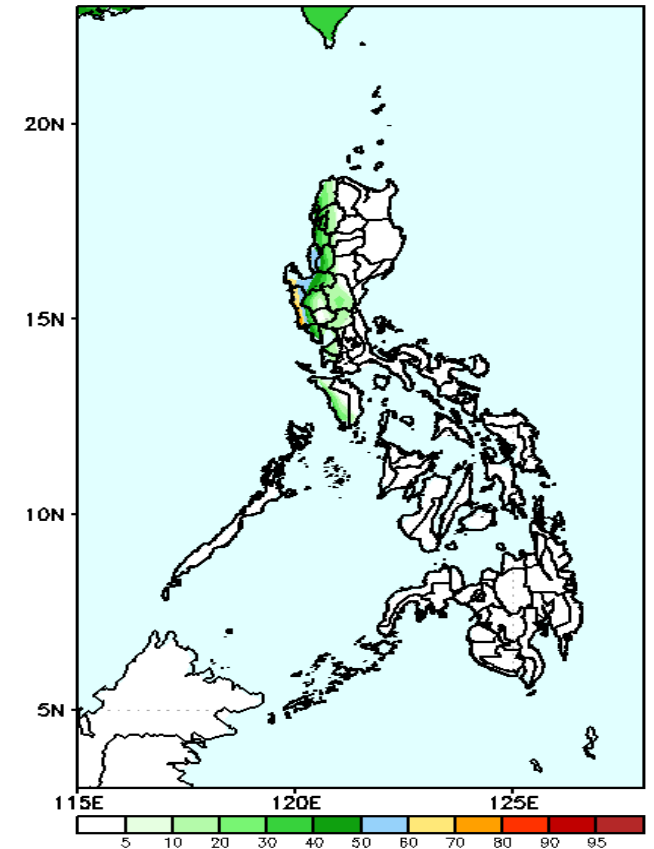
GEFS Week-1 Exceedance Prob. > 150mm
Valid: 20230901 - 20230907



Probability to Exceed 150mm

- Moderate to high over Pangasinan and the western section of Central Luzon;
- Low over the rest of the country.

GEFS Week-1 Exceedance Prob. > 200mm
Valid: 20230901 - 20230907



Probability to Exceed 200mm

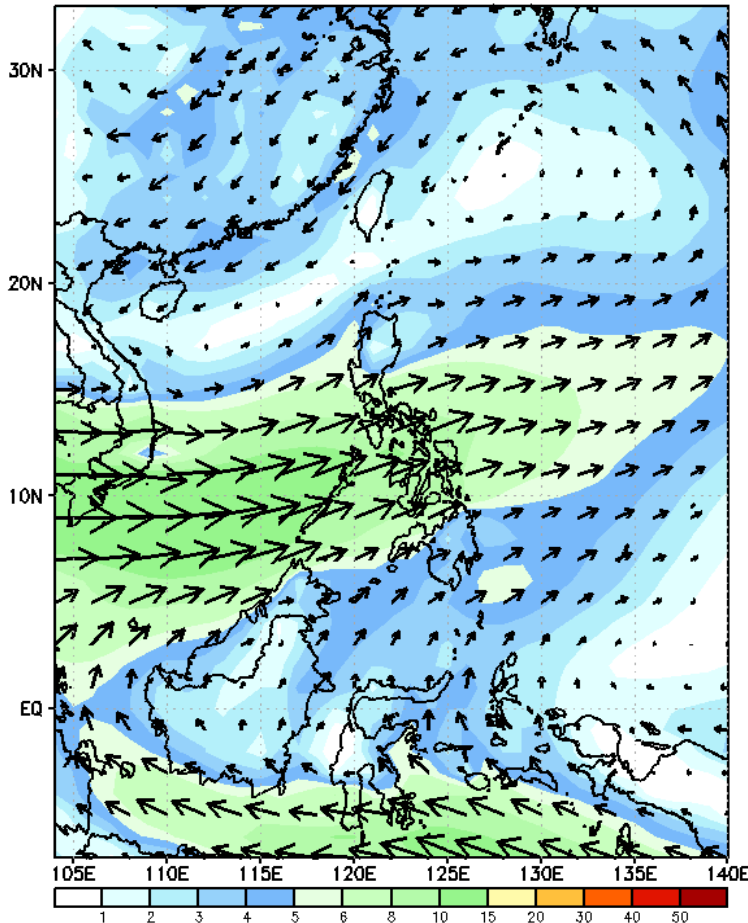
- Moderate over Pangasinan, La Union, and Zambales;
- Low over the rest of the country.



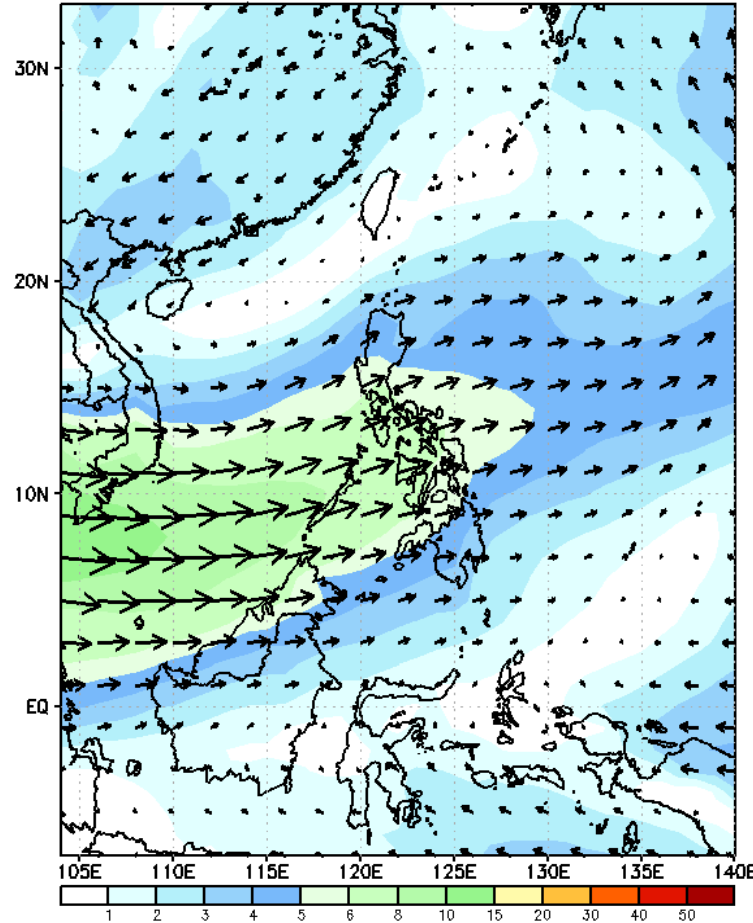
GEFS Week-2 Forecasts: Wind Forecast

Week 2: Sep 08-14, 2023

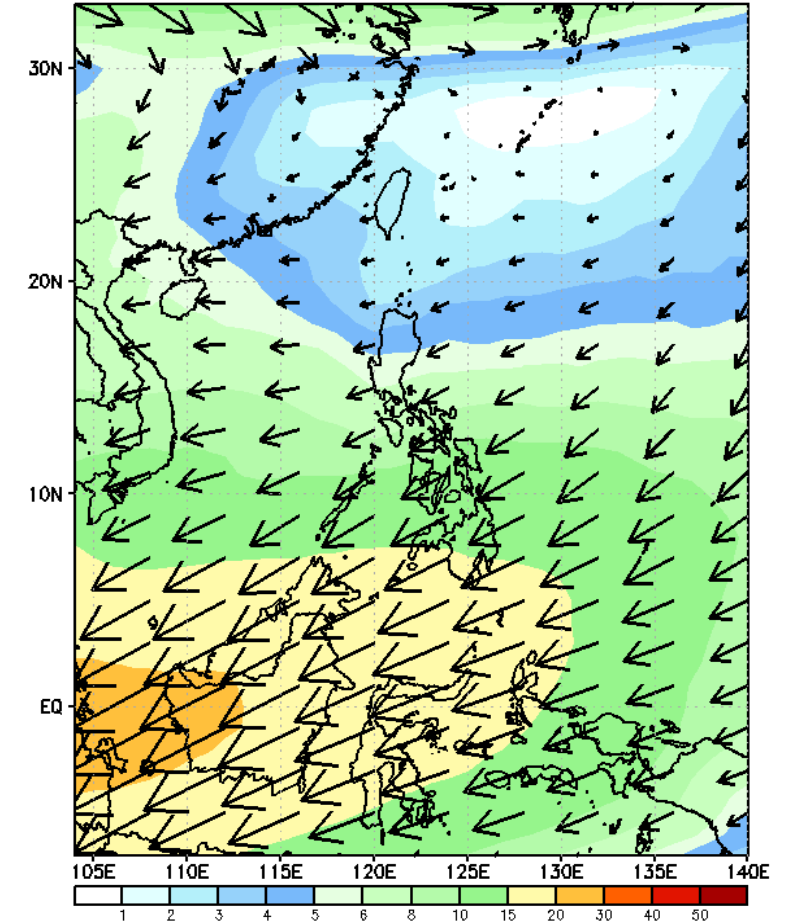
GEFS Week-2 850-hPa Wind Total
Valid: 20230908 – 20230914



GEFS Week-2 700-hPa Wind Total
Valid: 20230908 – 20230914



GEFS Week-2 200-hPa Wind Total
Valid: 20230908 – 20230914



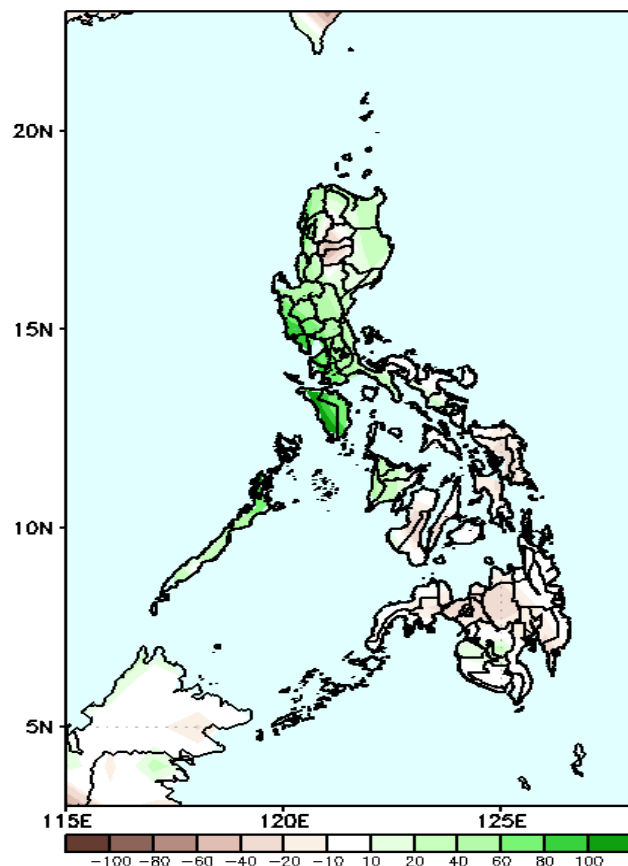
Southwest Monsoon is forecasted to prevail over the western sections of Luzon and Visayas.

Precipitation Anomaly and Exceedance Probability > 25/50 mm



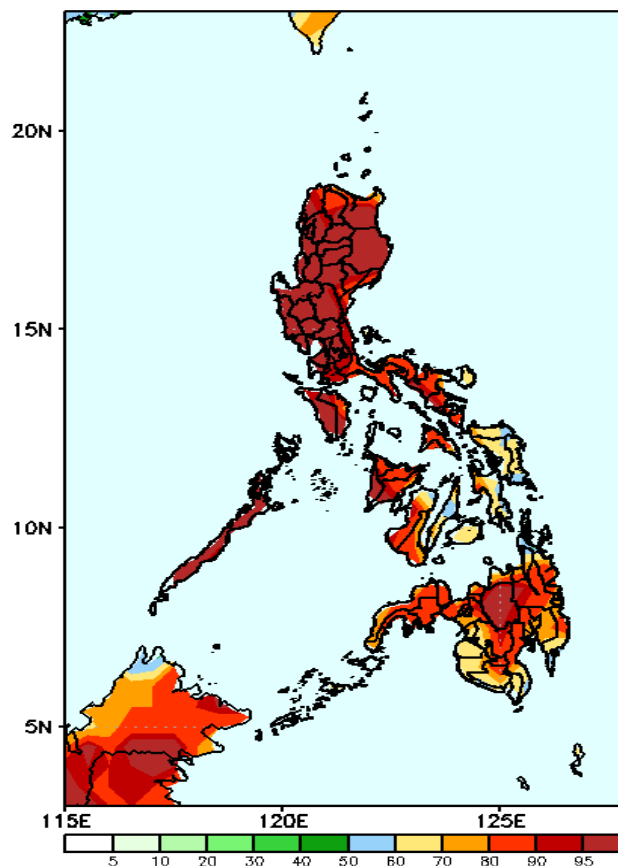
Week 2: Sep 08-14, 2023

GEFS Week-2 Precip Anomaly
Valid: 20230908 – 20230914



Increase of rainfall of 20-100mm in most parts of Luzon and Panay Island while 20-40mm rainfall deficit will be likely over the rest of the country.

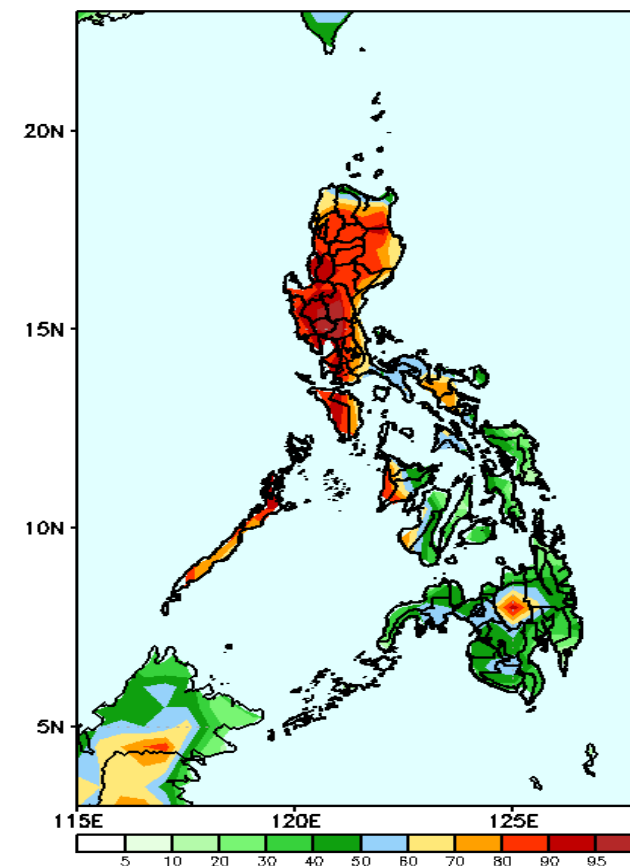
GEFS Week-2 Exceedance Prob. > 25mm
Valid: 20230908 – 20230914



Probability to Exceed 25mm

- High to very high in most parts of the country.

GEFS Week-2 Exceedance Prob. > 50mm
Valid: 20230908 – 20230914



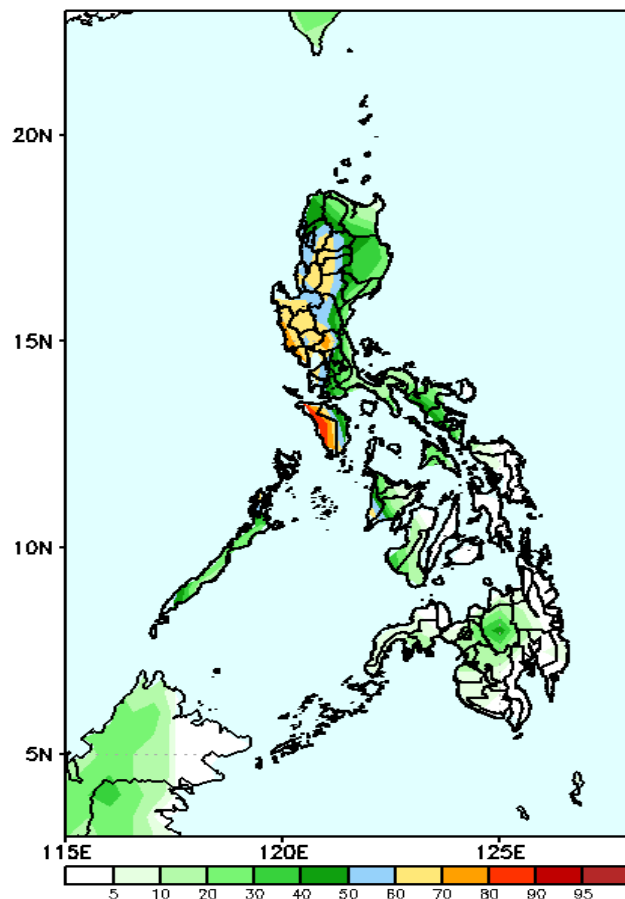
Probability to Exceed 50mm

- High to very high in most parts of Luzon;
- Moderate to high in Bicol Region, Western Visayas and central Mindanao;
- Low to moderate over the rest of the country.

Exceedance Probability > 100/150/200 mm

Week 2: Sep 08-14, 2023

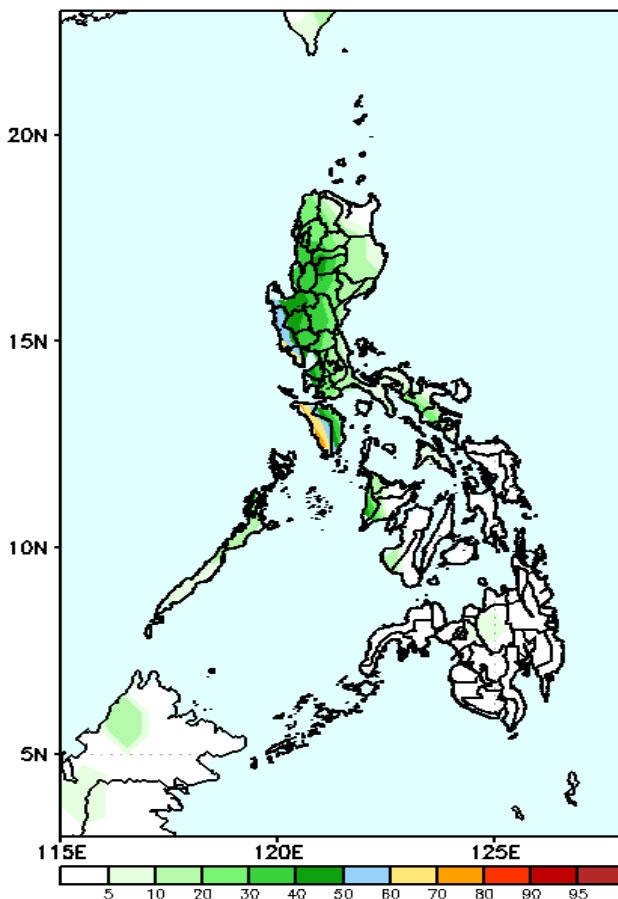
GEFS Week-2 Exceedance Prob. > 100mm
Valid: 20230908 – 20230914



Probability to Exceed 100mm

- Moderate to high in most parts of CAR, Ilocos Region, Central Luzon, NCR, Cavite, Batangas and Occidental Mindoro;
- Low over the rest of the country.

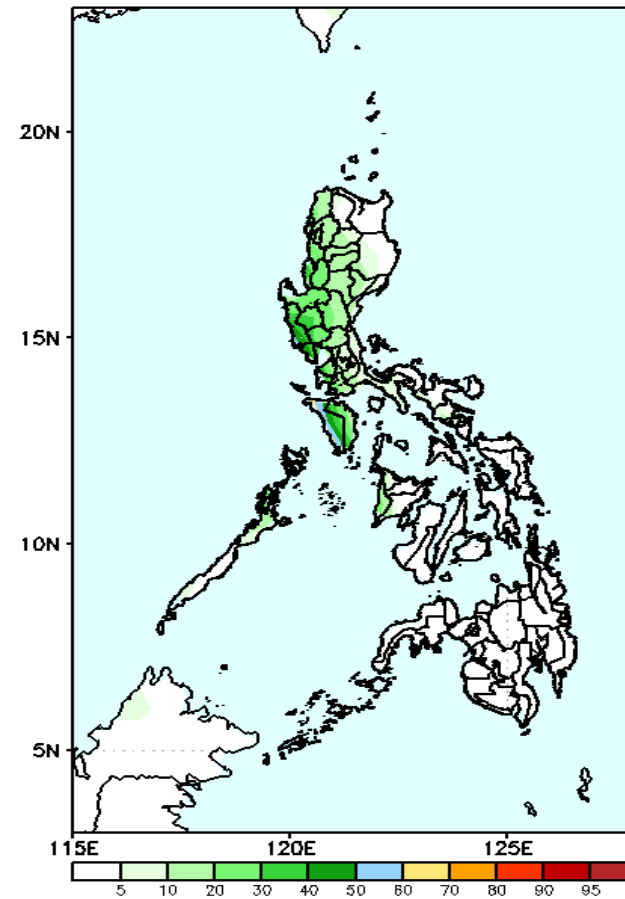
GEFS Week-2 Exceedance Prob. > 150mm
Valid: 20230908 – 20230914



Probability to Exceed 150mm

- Moderate over Zambales, Bataan and Occidental Mindoro;
- Low over the rest of the country.

GEFS Week-2 Exceedance Prob. > 200mm
Valid: 20230908 – 20230914

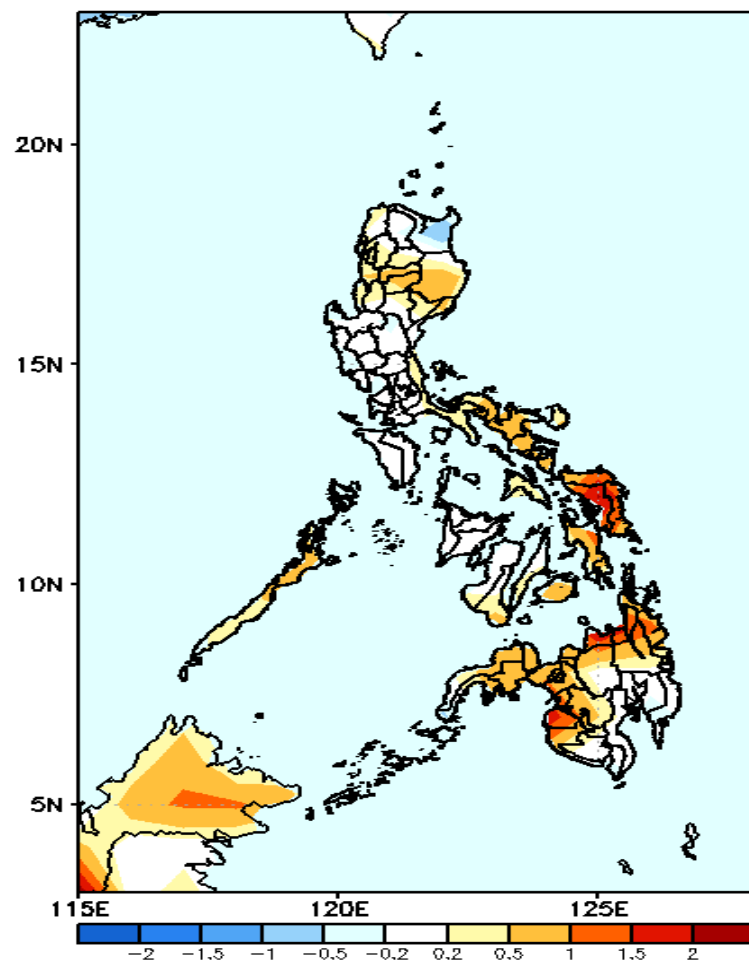


Probability to Exceed 200mm

- Low in most parts of the country.

GEFS Week-1 & 2 Forecasts: T2m Anomaly

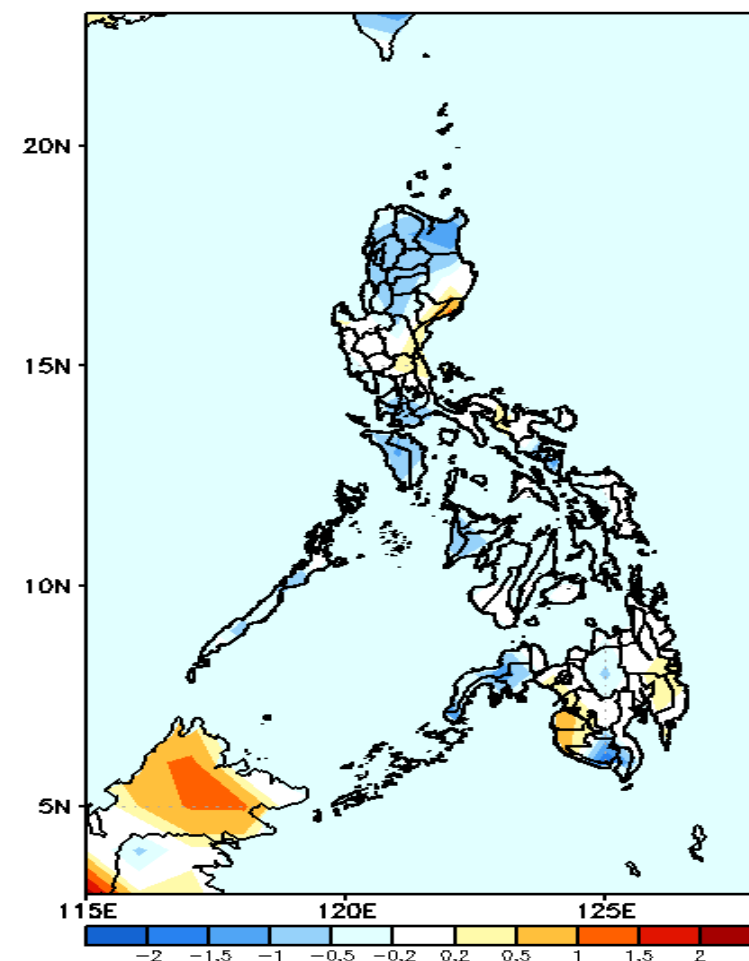
GEFS Week-1 T2m Anomaly
Valid: 20230901 – 20230907



2m Temperature Week 1: Sep 01-07, 2023

Average to warmer than average surface air temperature will likely experience in most parts of the country.

GEFS Week-2 T2m Anomaly
Valid: 20230908 – 20230914



2m Temperature Week 2: Sep 08-14, 2023

Average to cooler than average surface air temperature will likely experience in most parts of the country except in some areas in Aurora, Sultan Kudarat and Maguindanao where slightly warmer than average temperature is expected.